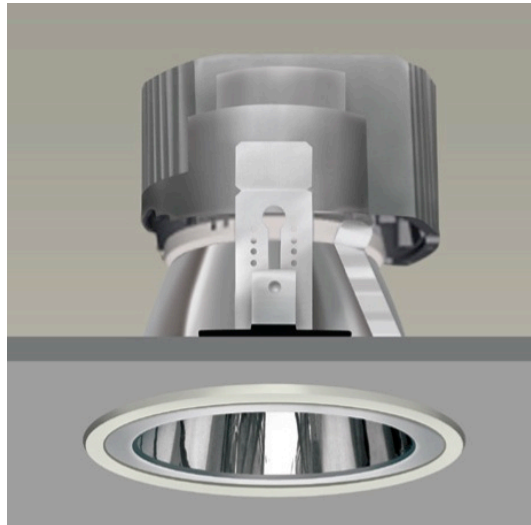



IDEAL LED Downlight with Lens



Round, Ø 171mm

Light source	:	High performance Philips Fortimo LED light module
Lumen output	:	1100lm; 2000lm; 3000lm
Light colour	:	Warm white, 3000K; Natural white, 4000K
Power consumption	:	12 – 39W
System efficacy	:	77 – 100lm/W
CRI	:	> 90
Voltage	:	220-240V / 50/60Hz (other voltages upon request)
Lifetime	:	50,000 hours
Driver unit	:	Philips Xitanium LED driver
		
		Operating temperature from -20 to +65°C
Ceiling rim	:	Die-cast aluminium with white powder coating (RAL 9002)
Reflector	:	Vacuum metalized aluminium in specular silver
Diffuser	:	Wide angle frosted glass lens
Heat sink	:	Die-cast aluminium alloy with high heat conductance
Cable	:	600mm length multi-core cable with plug-in connector to driver
DALI control	:	Optional
Ingress protection	:	IP 20
Optimum working temperature	:	25°C
Weight	:	1.20 kg

31068.103 (1100lm, 3000K, 14W)

31068.203 (2000lm, 3000K, 24W)

31068.303 (3000lm, 3000K, 39W)

31068.104 (1100lm, 4000K, 12W)

31068.204 (2000lm, 4000K, 20W)

31068.304 (3000lm, 4000K, 36W)